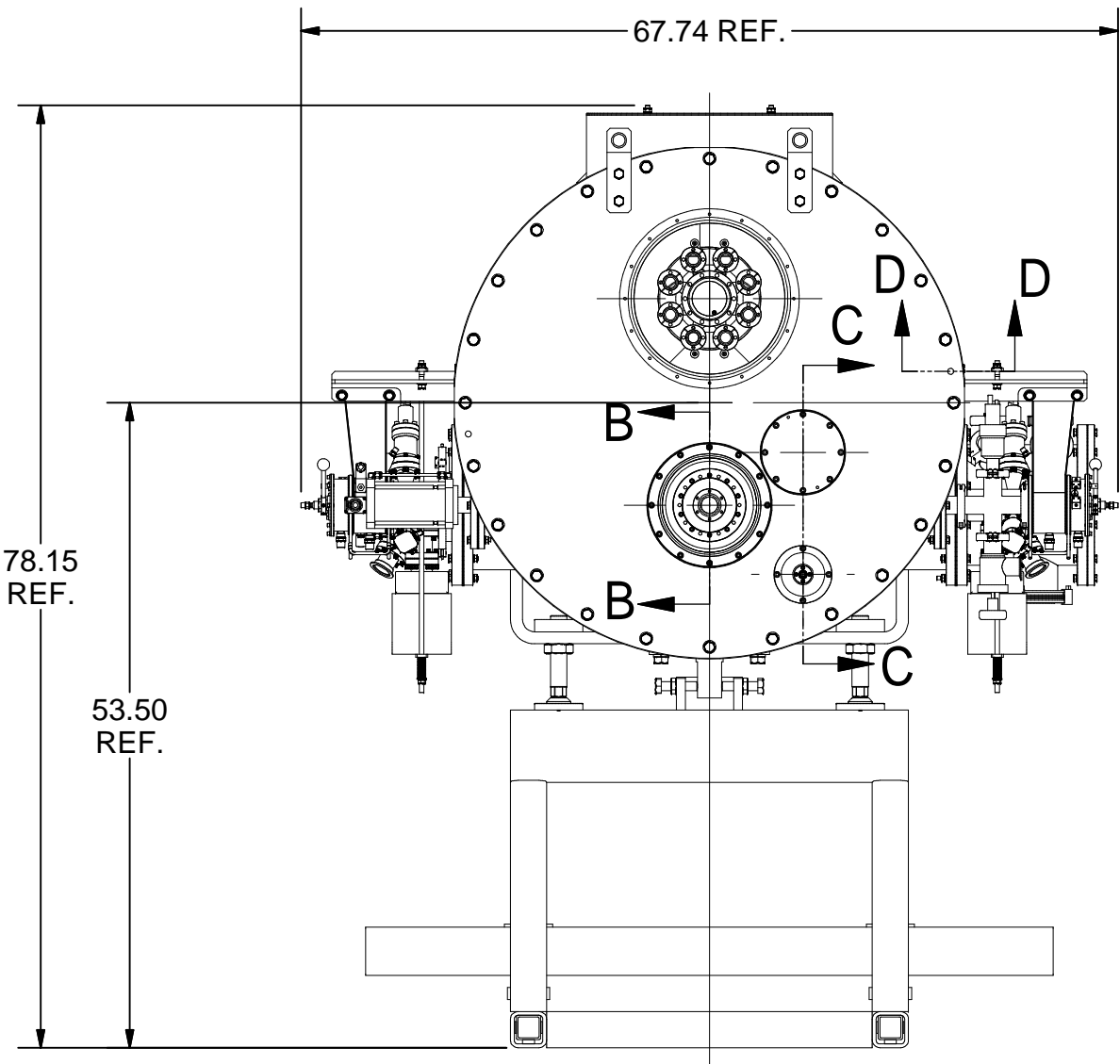
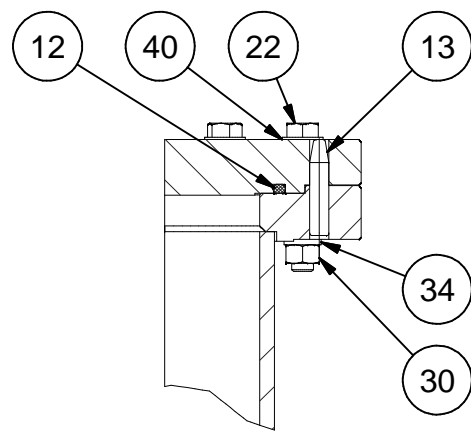


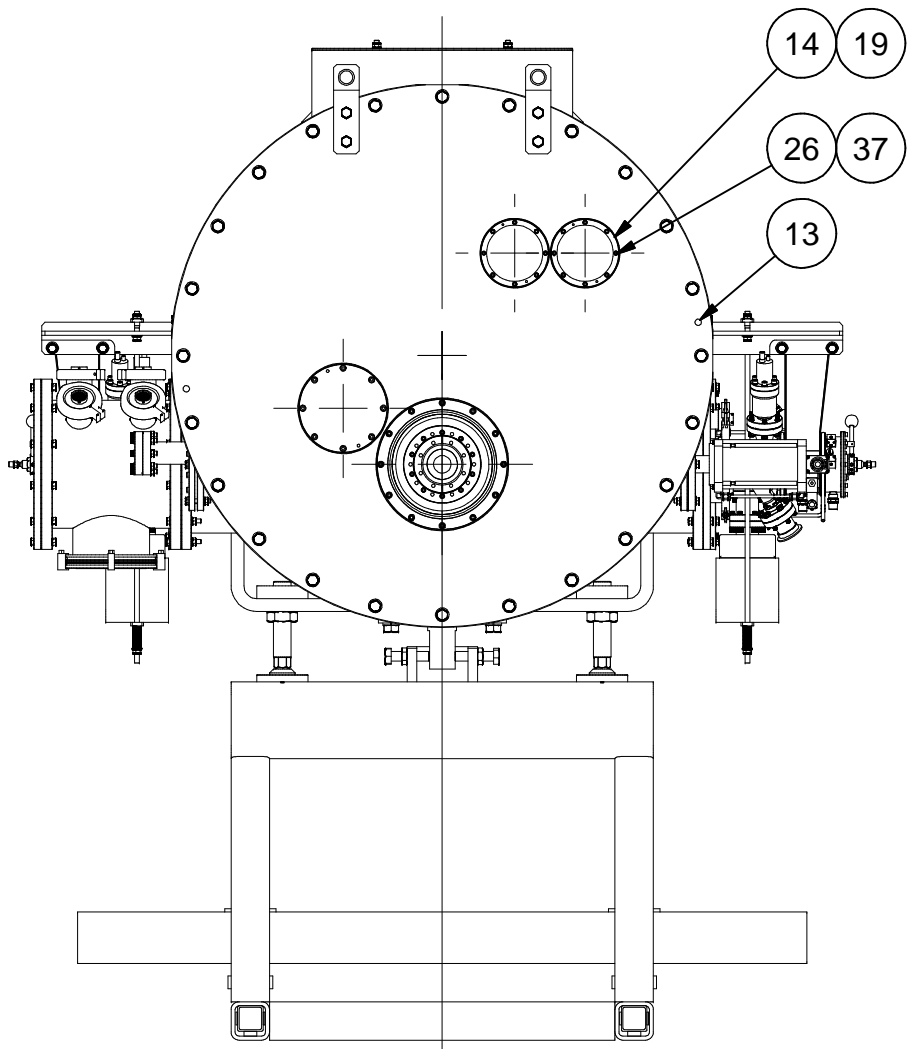
REVISIONS				
SYM.	ZONE	DESCRIPTION	DATE	APP.



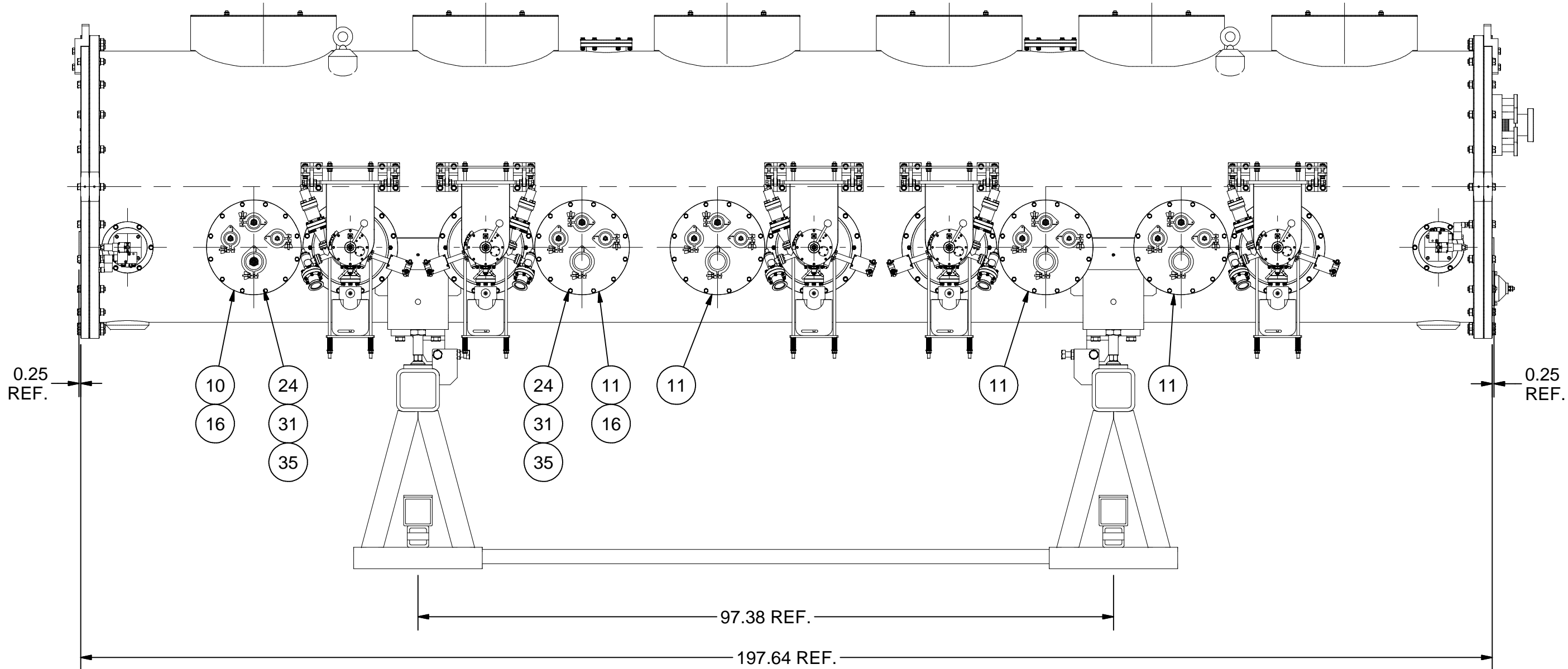
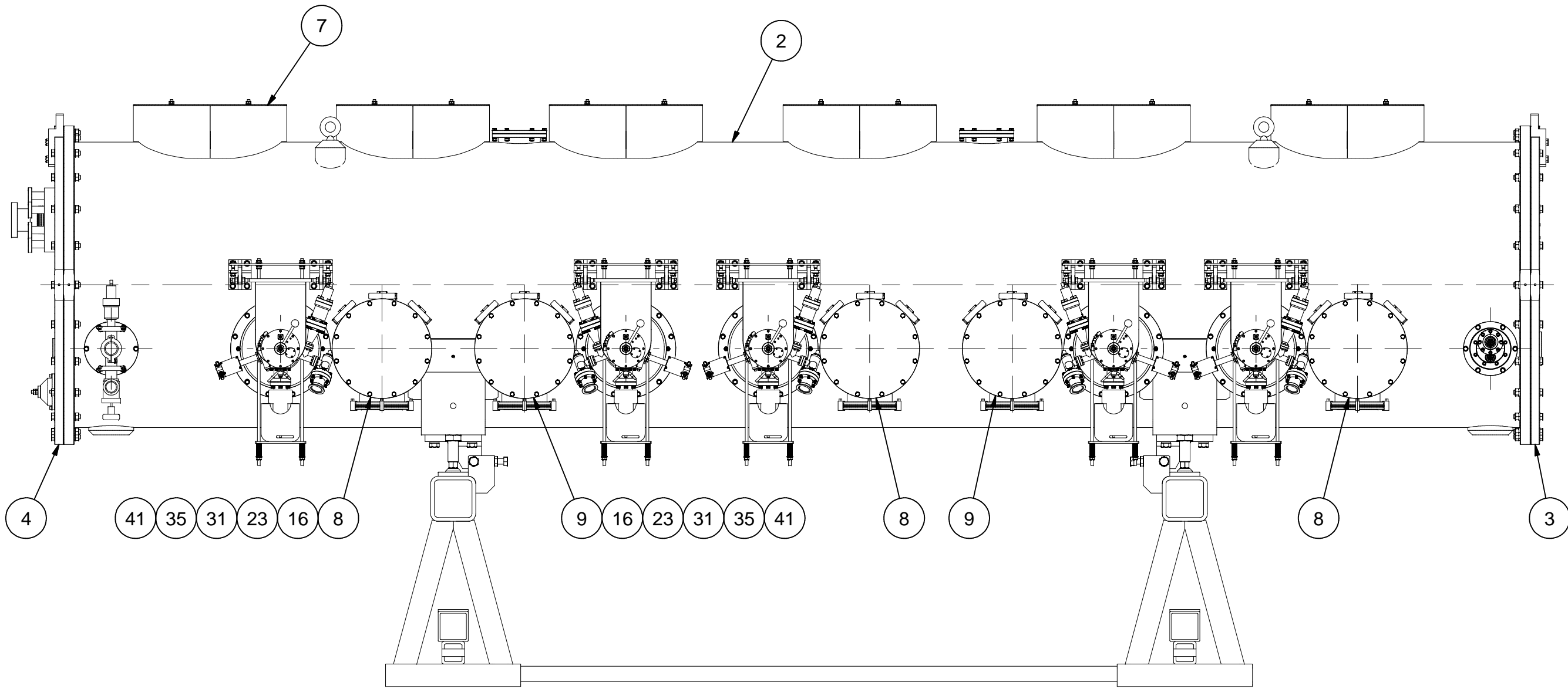
BEAM EXIT END



SECTION D-D
SCALE 1:5

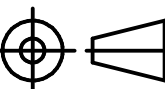
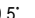



VIEW A-A
BEAM ENTRANCE END

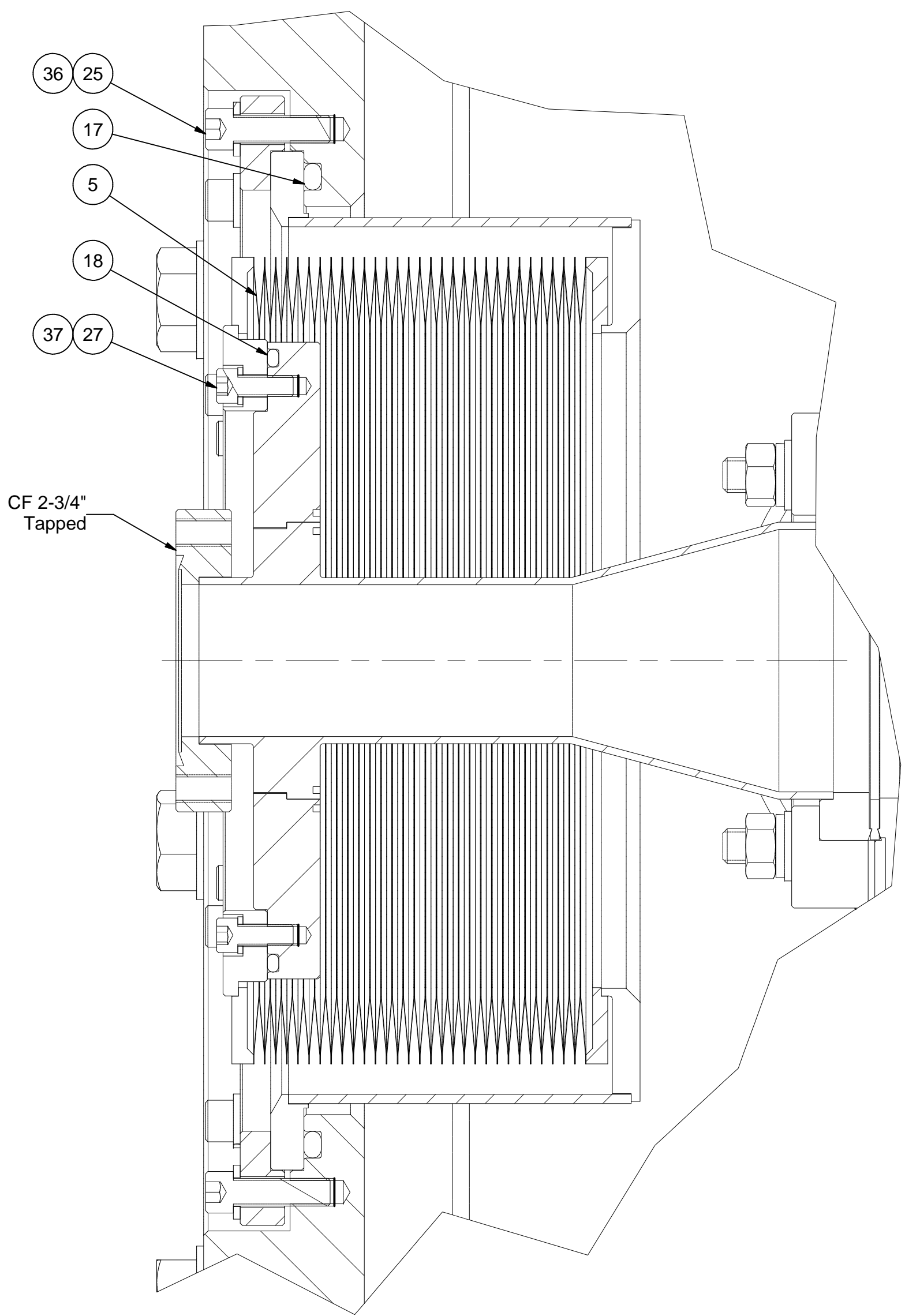


1 ASSEMBLY, STEP 14, FINAL
FILE NAME: 7102-103
SHEET NO.: 1
DFT. SCALE: 1:15
MATERIAL:
QTY: 1 PER CRYOMODULE
NOTES: 1. SEE SHEET 2 FOR SECTIONS B-B AND C-C.

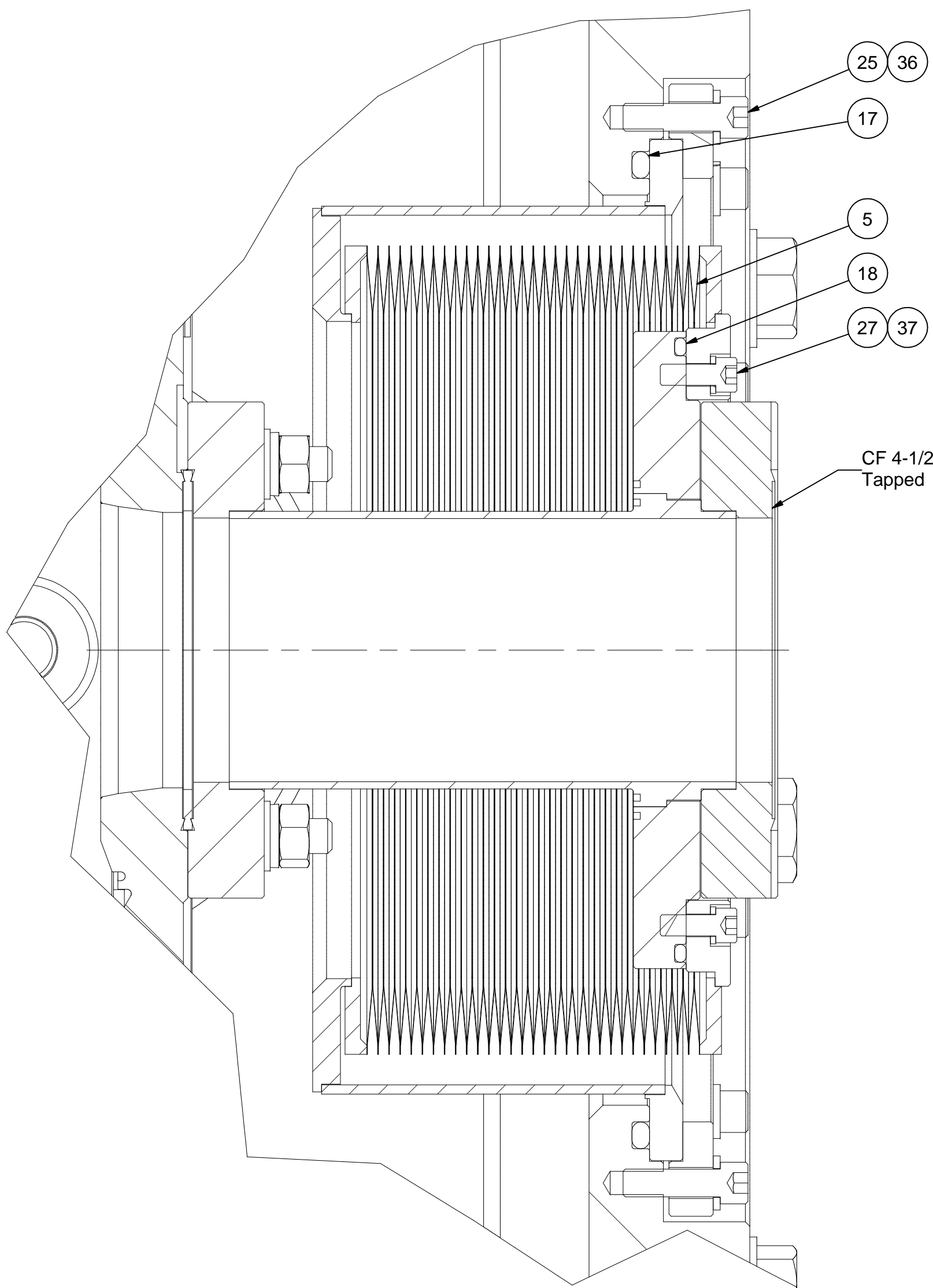
41	Purchased	5/16 Washer, SS	60		McMaster-Carr's 96659A107	
40	Purchased	9/16 Washer, SS	48		McMaster-Carr's 92141A034	
37	Purchased	#10 Spring Washer, SS	36		McMaster-Carr's 92146A550	
36	Purchased	1/4 Spring Washer, SS	24		McMaster-Carr's 92146A029	
35	Purchased	5/16 Spring Washer, SS	120		McMaster-Carr's 92146A030	
34	Purchased	9/16 Spring Washer, SS	48		McMaster-Carr's 92146A066	
31	Purchased	5/16-24 Hex Nut, SS	120		McMaster-Carr's 91845A115	
30	Purchased	9/16-12 Hex Nut, SS	48		McMaster-Carr's 91845A315	
27	Purchased	#10-32 x 1/2 Socket Head Cap Screw, SS	20		McMaster-Carr's 92196A269	
26	Purchased	#10-32 x 5/8 Socket Head Cap Screw, SS	16		McMaster-Carr's 92196A271	
25	Purchased	1/4-28 x 7/8 Socket Head Cap Screw, SS	24		McMaster-Carr's 92196A323	
24	Purchased	5/16-24 x 1-3/4 Hex Head Cap Screw, SS	60		McMaster-Carr's 92198A308	
23	Purchased	5/16-24 x 2-1/2 Hex Head Cap Screw, SS	60		McMaster-Carr's 92198A311	
22	Purchased	9/16-12 x 3-1/2 Hex Head Cap Screw, SS	48		McMaster-Carr's 92198A662	
19	Purchased	4.0 ID x 1/8 W (#242) O-Ring	2		Viton or EPDM	
18	Purchased	5.375 ID x 1/8 W (#253) O-RING	2		Viton or EPDM	
17	Purchased	8.5 ID x 3/16 W (#371) O-RING	2		Viton or EPDM	
16	Purchased	11.0 ID x 3/16 W (#379) O-RING	10		Viton or EPDM	
14	7110-018 (lt.11)	2 K WIRE TUBE BLANK	2			
13	7110-030 (lt.5)	0.5 x 2.5 PIN MODIFICATION	4			
12	7110-030 (lt.10)	38 ID x 1/4 W O-RING	2			
11	7102-082 (lt.11)	300 K ACTIVE ELEMENTS FLANGE-II ASSEMBLY	4			
10	7102-082 (lt.10)	300 K ACTIVE ELEMENTS FLANGE-I ASSEMBLY	1			
9	7102-082 (lt.2)	300 K SENSOR INTERFACE FOR ICM 8 SMA	2			
8	7102-082 (lt.1)	300 K SENSOR INTERFACE FOR ICM 21 SMA	3			
7	7110-009 (lt.30)	COVER ASSEMBLY	6			
6	7110-031	WPM WEIGHT FIXING UNIT	1			
5	7102-048	VACUUM VESSEL BEAM TUBE BELLOWS UNIT	2			
4	7110-005	VACUUM VESSEL BEAM EXIT WALL	1			
3	7110-004	VACUUM VESSEL BEAM ENTRANCE WALL	1			
2	7102-102	ASSEMBLY, STEP 13	1			
1	7102-103 (Sh.1)	ASSEMBLY, STEP 14, FINAL	1			

	ITEM	DWG. NO.	DESCRIPTION	G1	G2	G3	REMARKS	REV.
				QUANTITY				
D 7102-103 SH. NO. 1 OF 2	PRINT DISTR.	PLOT DATE: 2/19/08 CAD FILE NAME: 7102-103.idw						
	CR-1	UNLESS OTHERWISE SPECIFIED: DIMENSIONS ARE IN INCHES: TOLERANCES ON: .0 ± .02 .00 ± .010 .000 ± .005 FRACTIONS ± 1/32 ANGLES ± 0.5° ALL SURFACES 		<div><div>CORNELL UNIVERSITY Floyd R. Newman Laboratory Ithaca, NY 14853</div></div> ERL INJECTOR CRYOMODULE ASSEMBLY, STEP 14, FINAL				
	CHECKED BY: VM							
	REV.	APPROVED BY: VM	VM	M.Liepe	2/19/08			

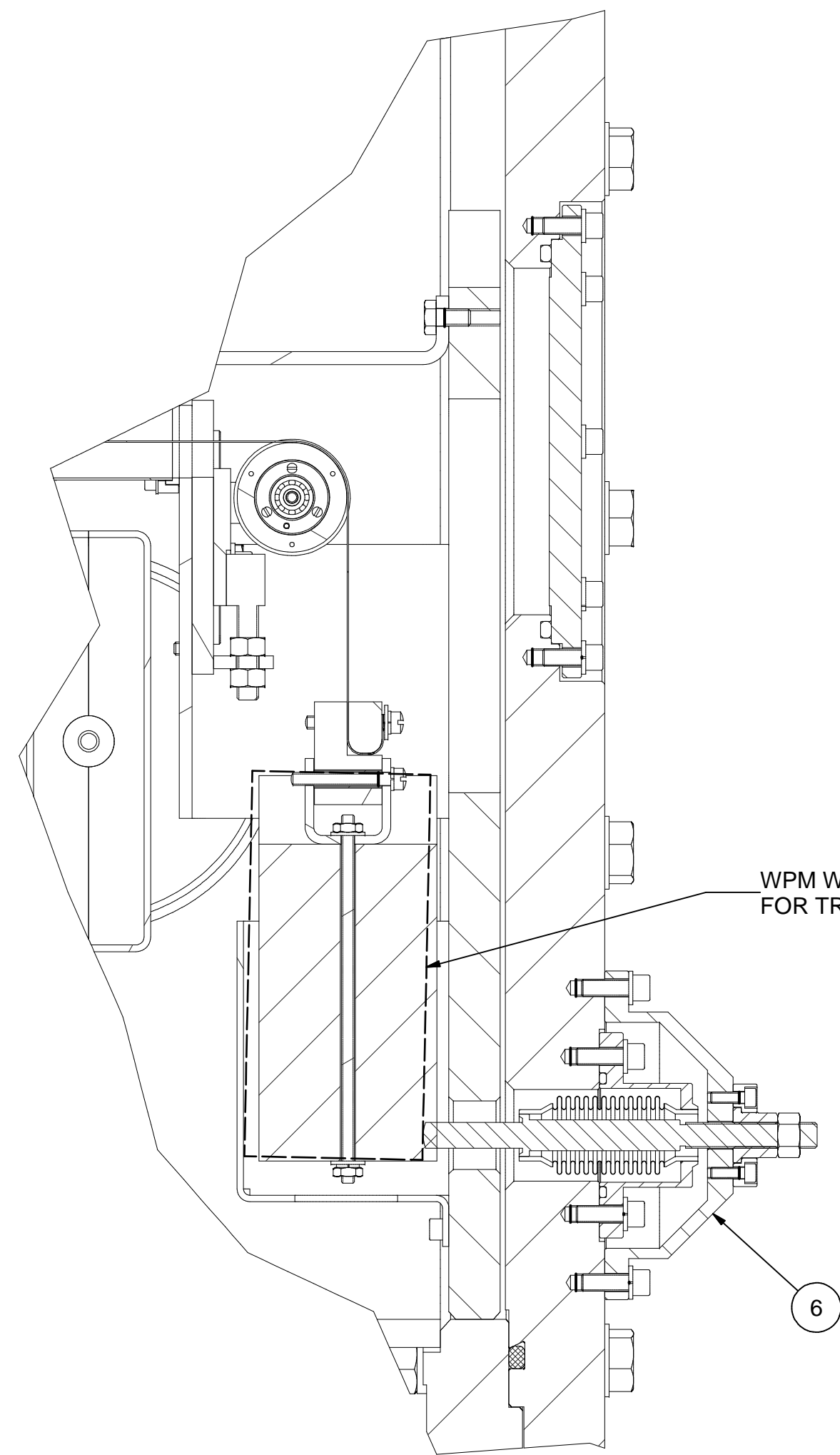
REVISIONS			
SYM.	ZONE	DESCRIPTION	DATE APP.




SECTION B-B
BEAM EXIT END
(SEE SHEET 1)
SCALE 1:1



SECTION B-B
BEAM ENTRANCE END
(SEE SHEET 1)
SCALE 1:1



SECTION C-C
(SEE SHEET 1)
SCALE 1:2

		ITEM	DWG. NO.	DESCRIPTION			G1	G2	G3	REMARKS		REV.
								QUANTITY				
D	PRINT DISTR.	PLOT DATE: 2/19/08 CAD FILE NAME: 7102-103.idw										
	7102-103 SH. NO. 2 OF 2	CR-1	UNLESS OTHERWISE SPECIFIED: DIMENSIONS ARE IN INCHES: TOLERANCES ON: .0 ± .02 .00 ± .010 .000 ± .005 FRACTIONS ± 1/32 ANGLES ± 0.5° ALL SURFACES	<div><div><div>CORNELL UNIVERSITY Floyd R. Newman Laboratory Ithaca, NY 14853</div></div><div>ERL INJECTOR CRYOMODULE ASSEMBLY, STEP 14, FINAL SECTIONS B-B AND C-C</div></div>								
REV.				CHECKED BY: VM APPROVED BY: VM	DRAWN BY VM	DRAWN FOR M.Liepe	DATE 2/19/08	SCALE	D	7102-103 SH. NO. 2 OF 2	REV.	